

# Urban Twin Steel Locker - Installation Guidelines

The Urban Twin Steel Locker is a fully enclosed, highly secure, ground mounted locker suitable for short or long term bike parking. It's durable, powder coated finish is available in standard and custom colors, with a variety of locking options. Suitable for indoor or outdoor use, the Urban Twin Steel Locker will protect bikes from the elements while keeping them secure.

## Minimum Ground Requirements

**Concrete:** common concrete floors are recommended for ground mounting.

**Asphalt:** asphalt is a suitable mounting surface, however if the locker is to be anchored, the use of an effective asphalt epoxy adhesive will help to insure a stable installation.

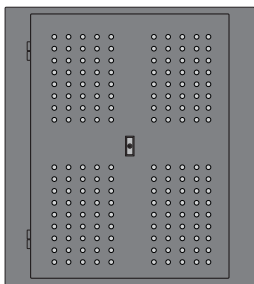
## Tools Required

Tape Measure & Level  
Ratchet with Extension or Drill/Driver  
Hex Bit  
1/2" Masonry Drill Bit  
Hammer Drill & Hammer  
Large Adjustable Wrench  
Deep Socket with Extension

## Parts Identification

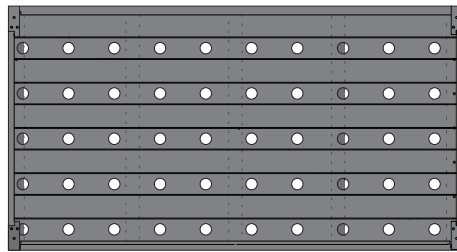
The Urban Twin Steel Locker ships flat packed in seven cartons as follows:

CARTONS 1 & 2



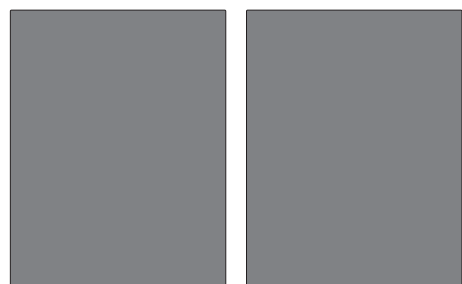
Door & Frame  
2 pcs  
1 per carton

CARTON 3



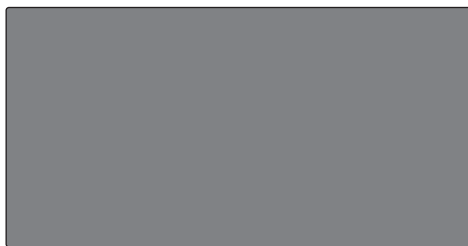
Base & Floor  
1 pce  
1 per carton

CARTON 4



Side Panels  
4 pcs  
4 per carton

CARTON 5



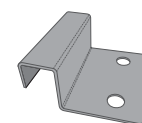
Roof  
1 pce  
2 per carton (as required)

CARTON 6

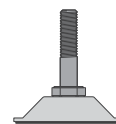


Partition Panel  
2 pcs  
2 per carton

CARTON 7



Anchor Bracket  
2 pcs



Base Feet  
6 pcs

Assembly Hardware

**URBAN RACKS**

INNOVATIVE | BICYCLE PARKING

1-888-717-8881 sales@urbanracks.com

For more product and company information,  
please visit us at [www.urbanracks.com](http://www.urbanracks.com)

# Urban Twin Steel Locker - Installation Guidelines

## Assembly Hardware Detail

In addition to the Anchor Brackets and Base Feet, you will also receive the following hardware:



Panel Pack



Used to affix the side panels to the base, end frames and roof

End Frame Pack



Used to secure the end frames to the base and roof

Handle/Lock Pack



Used to affix the t-handle to the door, as well as to assemble the locking bars

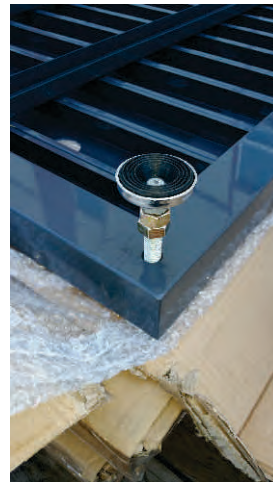
## Step by Step - Base Assembly



Locate the base carton and open it as is.



With the base resting on the open carton, locate the large, threaded holes along the perimeter of the base.



Locate the base feet and gently thread all six feet into the threaded holes of the base to a depth of about half an inch (12mm). Do not set the locking nut at this time.



With a helper, turn the base over onto the concrete at the desired installation location. The floor beams will remain loose in the carton; simply place them into the base as shown.

## URBAN RACKS

INNOVATIVE | BICYCLE PARKING

1-888-717-8881 sales@urbanracks.com  
For more product and company information,  
please visit us at [www.urbanracks.com](http://www.urbanracks.com)

# Urban Twin Steel Locker - Installation Guidelines

## Step by Step - Door & Frame Assembly



Locate the first door & frame and with a helper, position it onto the base.



Align the three holes in the door frame with those in the base. Using hex cap bolts, thread them into the base; do not tighten. Repeat on the opposite side of the door frame. Once all bolts are in position, tighten them securely.



Repeat these steps for the second door & frame. You locker should now appear as shown above.

## Step by Step - Sides & Partition Assembly



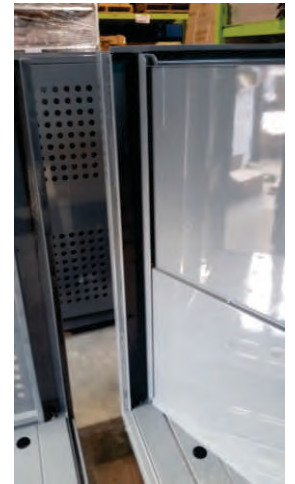
Locate and position the first side panel onto the base.



Using the self tapping screws, affix the side panel to the door frame as shown.



Fasten the side panel to the base, then repeat for the second panel. Fasten first to the door frame, then to the base, finishing by fastening the two panels together.



Next, locate the two partition panels and with a helper, carefully slide the panels down from above, into the channels located at either end of the locker.

**URBAN RACKS**

INNOVATIVE | BICYCLE PARKING

1-888-717-8881 sales@urbanracks.com  
For more product and company information,  
please visit us at [www.urbanracks.com](http://www.urbanracks.com)

# Urban Twin Steel Locker - Installation Guidelines

## Step by Step - Sides & Partition Assembly Con't



Note: insert the partition panels at opposing directions to each other to increase rigidity.



Affix the two partition panels to each other using self tapping screws along the horizontal seam. There is no need to attach the partition to the base or to the door frames.

Repeat the steps to assemble the second side of the locker.



Once the sides and partition are in place, your locker will appear as shown.

Tip: Install the partition prior to affixing the second side. Doing so will make inserting and aligning the partition easier.

## Step by Step - Roof



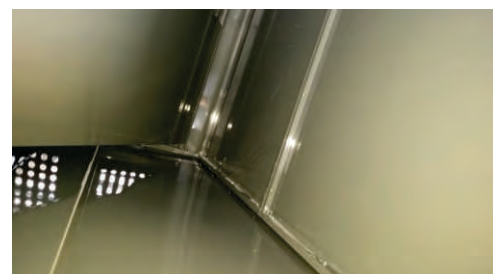
With a helper, locate the roof and position it on top of the locker as shown. While handling the roof from either end, carefully maneuver the roof into alignment with the door frames.

### CAUTION: PINCH HAZARD

Gently drop the roof down onto the sides and door frames: it will settle into the correct position.



From inside either end of the locker, align the mounting holes located from within the corners of the door frame, and loosely insert the hex cap bolts. Keeping the bolts loose will allow the roof to be moved for proper alignment. Once aligned, tighten the bolts securely.



Again from within the locker, use self tapping screws to affix the locker sides to the roof. Drive the screws up through the lip of the side panels into the bottom of the roof frame.

TIP: Throughout the locker you will find pilot holes that can be used to help start the self tapping screws.

NOTE: Should the bolt holes for the door frames not fully align, it is acceptable to use a minimum of two bolts per corner.

## URBAN RACKS

INNOVATIVE | BICYCLE PARKING

1-888-717-8881 sales@urbanracks.com

For more product and company information, please visit us at [www.urbanracks.com](http://www.urbanracks.com)

# Urban Twin Steel Locker - Installation Guidelines

## Step by Step - Anchoring the Locker (recommended)

Urban Racks recommends securely anchoring the locker to the surface upon which it has been installed. This will prevent the locker from being tipped or otherwise upended, as well as help the locker to remain level and at its intended location.



Once the locker has been fully assembled, it is important to ensure the locker is fully square and as level as the installation surface will allow. This is accomplished using the adjustable base feet.

Test the “squareness” of the locker by closing each door and checking for points that are rubbing on the door frames. The doors should operate smoothly without binding. If one or both doors are binding, simply adjust the base feet up or down until the doors operate smoothly. This may require a little “trial and error” using one or more feet until it’s “just right”.

It’s more important that the locker is square than it is level.

Once the locker has been squared and leveled at its final location, it can be secured to the surface using the supplied Anchor Brackets and concrete wedge anchors.



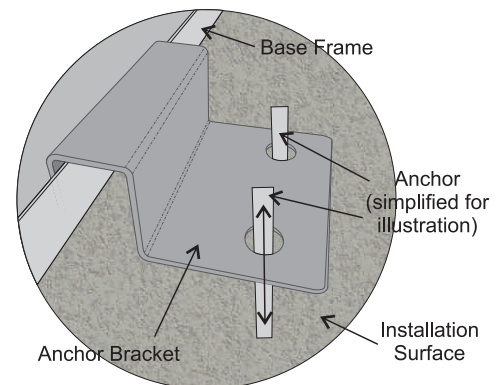
The Anchor Brackets are installed from within the assembled locker.

When the base of the locker was assembled, the floor “slats” were simply placed within the frame without being affixed.

To install the Anchor Brackets, you must first lift out the floor slat adjacent to the wall. Lift one end at the door frame and then simply pull it out of position. A second slat can be removed should you require more room to work.

Next, position the Anchor Bracket over the edge of the locker base, as shown in “Anchor Detail”. Hold the bracket approximately horizontal and drill holes for the anchors using a hammer drill and appropriately sized masonry bit.

Insert the anchors through the holes in the Anchor Bracket and using a hammer, drive the anchors into the holes. Tighten the hex nuts until the anchors “set” themselves, then loosen the nuts about two turns. This will allow the locker to “float” for future adjustment as may be required.



### Anchor Detail

Anchors are permanently installed into base concrete. Once installed, the anchor bracket secures the locker from beneath, while allowing for ongoing leveling and/or squaring of the locker as the ground may settle. This elevated state helps to protect the locker from the elements, facilitates under locker cleaning, and enables future relocation.



**URBAN RACKS**

INNOVATIVE | BICYCLE PARKING

1-888-717-8881 sales@urbanracks.com

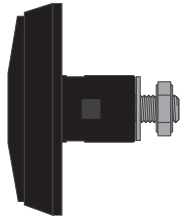
For more product and company information, please visit us at [www.urbanracks.com](http://www.urbanracks.com)

# Urban Twin Steel Locker - Installation Guidelines

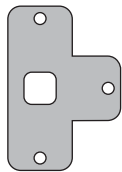
## Step by Step - T-Handle Assembly

The Urban Twin Steel Locker comes equipped with a pop-up T-Handle as the standard locking choice, and some assembly is required during the installation of the locker. These steps can be completed after the locker has been fully installed, but Urban Racks recommends doing so prior to starting assembly of the locker. Doing so will make assembling the lower locking bar a little easier.

## Parts Identification - T-Handle Assembly



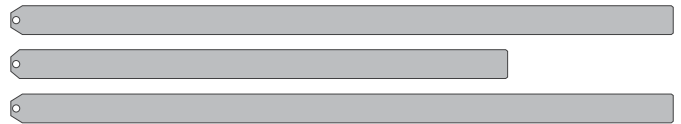
T-Handle x 2



Tee Plate x 2



Handle/Lock Pack x 1



Locking Bar Set  
4 x Long & 2 x Short

## Step by Step - T-Handle Installation



Begin by removing the large hex nut from the end of the T-handle and separating it into five parts:

- 1) Pop-up Handle
- 2) Handle Mount
- 3) 1/4 Turn Washer
- 4) Locking Washer
- 5) Hex Nut



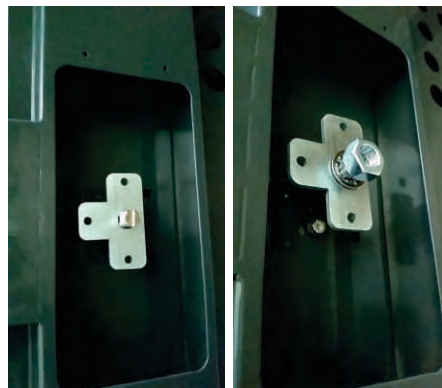
Insert the Handle Mount (2) through the mounting hole in the locker door



Secure the mount with two carriage bolts and locking nuts (found in the Handle/Lock Pack) - tighten securely from the inside of the door



Insert the Pop-up Handle (1) back into the Handle Mount. While holding the Pop-up Handle in place from the outside, place the 1/4-turn Washer (3) onto the shaft of the handle.



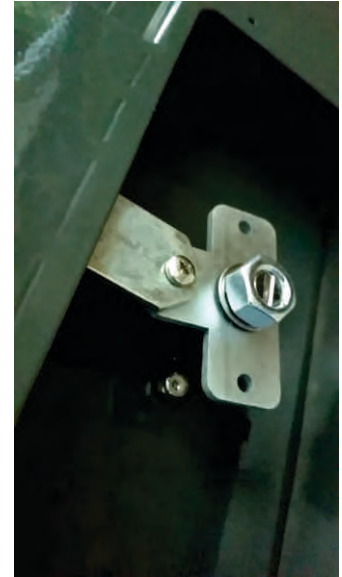
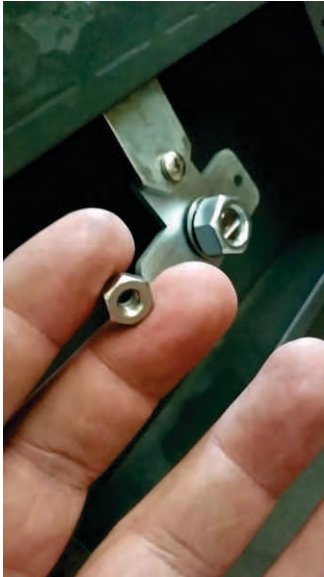
While still holding the handle in place, place the Tee Plate onto the shaft. Be sure that each "leg" of the Tee faces toward a channel in the door. Then place the Locking Washer (4) and the Hex Nut (5) onto the shaft and tighten.



Next, insert one of the Locking Bars into the slot on the outside edge of the open door as shown. The short bar is used in the left/right position while the two long bars are used in the vertical positions.

# Urban Twin Steel Locker - Installation Guidelines

## Step by Step - Locking Bars



Locate three Pan Head Screws and locking nuts from the Handle/Lock pack. Align the Locking Bar above the hole in the Tee Plate and insert the pan head screw. Position a Locking Nut at the back of the Tee Plate and start the threads by hand.

Using a 10 mm combination wrench and a Phillips head screwdriver, tighten the screw until assembly is snug, then back off the screw 1/8th of a turn.

Test the rotation of the T-handle; it should move freely without binding while the Locking Bar is relatively free of “wobble” or rattle. Repeat this process for the two remaining Locking Bars.

## Step by Step - Final Steps



When correctly assembled, the Locking Bar should extend through the slotted hole in the outer edge of the door.



After assembling the entire locking mechanism, locate the cover plate and affix it to the inside of the door using self-tapping screws.

Repeat the T-handle installation steps for the second door of the locker.

Congratulations! Your assembly and installation of the Urban Twin Steel Bike Locker is now complete.

**URBAN RACKS**

**INNOVATIVE | BICYCLE PARKING**

1-888-717-8881 [sales@urbanracks.com](mailto:sales@urbanracks.com)

For more product and company information, please visit us at [www.urbanracks.com](http://www.urbanracks.com)